

HRMDC(M)16 new

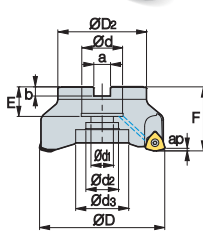


Fig. 1

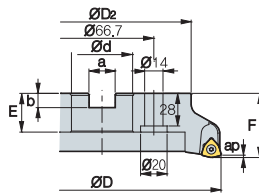


Fig. 2

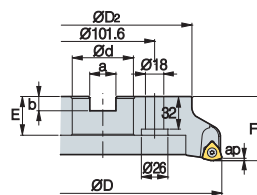


Fig. 3

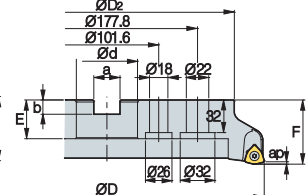
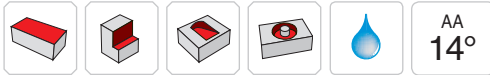


Fig. 4



• AR: -7°
• RR: -12°~ -4°

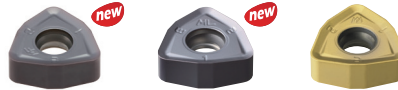
(mm)

Designation	ØD	ØD2	Ød	Ød1	Ød2	Ød3	a	b	E	F	ap	kg	Bolt	Fig.	
HRMDC (HRMDCM) 16080HR-4	4	80	65	25.4 (27)	14	20	-	9.5 (12.4)	6 (7)	25 (23)	50	2.5	0.99	SB1230	1
16080HR-5	5	80	65	25.4 (27)	14	20	-	9.5 (12.4)	6 (7)	25 (23)	50	2.5	0.91		
16100HR-5	5	100	85	31.75 (32)	18	26	-	12.7 (14.4)	8	33 (25)	63 (50)	2.5	1.68	SB1630	1
16100HR-6	6	100	85	31.75 (32)	18	26	-	12.7 (14.4)	8	33 (25)	63 (50)	2.5	1.64		
16125HR-6	6	125	100	38.1 (40)	22	32	52	15.9 (16.4)	10 (9)	36 (29)	63	2.5	3.23	SB2040	1
16125HR-7	7	125	100	38.1 (40)	22	32	52	15.9 (16.4)	10 (9)	36 (29)	63	2.5	3.24	MBA-M20	
16160R-7	7	160	107	50.8 (40)	-	90	-	19 (16.4)	11 (9)	38 (32)	63	2.5	3.73	MBA-M24	2
16160R-8	8	160	107	50.8 (40)	-	90	-	19 (16.4)	11 (9)	38 (32)	63	2.5	3.77		
16200R-8	8	200	145	47.625 (60)	-	132	-	25.4 (25.7)	14	38	63	2.5	6.48	-	3
16200R-10	10	200	145	47.625 (60)	-	132	-	25.4 (25.7)	14	38	63	2.5	6.61		
16250R-10	10	250	190	47.625 (60)	-	190	-	25.4 (25.7)	14	38	63	2.5	11.01	-	3
16250R-12	12	250	190	47.625 (60)	-	190	-	25.4 (25.7)	14	38	63	2.5	11.04		
16315R-12	12	315	250	47.625 (60)	-	238	-	25.4 (25.7)	14	38	63	2.5	18.34	-	4
16315R-14	14	315	250	47.625 (60)	-	238	-	25.4 (25.7)	14	38	63	2.5	18.35		

() Metric size

Available inserts

WNNX-MF WNNX-ML WNNX-MM



Designation	Cermet		Coated										Uncoated			page		
	CN2000	CN30	NCM325	NC5330	NCM535	NCM545	PC2505	PC2510	PC3600	PC3700	PC6510	PC9530	PC9540	PC5300	PC5400		ST30A	G10
WNNX 160720ZNN-MF									●					●				
160720ZNN-ML														●				
160720ZNN-MM									●	●				●	●			

Available arbors

Designation	HRMDC	HRMDCM
HRMDC (HRMDCM) 16080HR-4	BT□□-FMA25.4-□□	BT□□-FMC27-□□
16080HR-5		
16100HR-5	BT□□-FMA31.75-□□	BT□□-FMC32-□□
16100HR-6		
16125HR-6	BT□□-FMA38.1-□□	BT□□-FMB40-□□
16125HR-7		
16160R-7	BT□□-FMA50.8-□□	BT□□-FMC40-□□
16160R-8		
16200R-8		
16200R-10		
16250R-10	BT□□-FMA47.625-□□	BT□□-FMB60-□□
16250R-12		
16315R-12		
16315R-14		

Bolt

Fig. 1

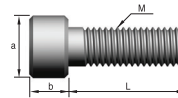
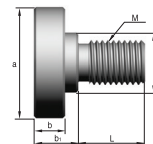


Fig. 2



Designation	Dimensions (mm)							Fig.
	M	a	b	b1	C	L	pitch	
SB1025	M10	16	10	-	-	25	1.5	1
SB1230	M12	18	12	-	-	30	1.75	1
SB1630	M16	24	16	-	-	30	2.0	1
SB2040	M20	30	20	-	-	40	2.5	1
MBA-M20	M20	50	14	20	27	30	2.5	2
MBA-M24	M24	65	14	24	37	36	3.0	2

Parts

Specification	Screw	Wrench
Ø80~Ø315	FTGA0513-P	TW20-100

Available inserts E28 Available arbors and bolt E400~E402